

2022 – METALLIC FINISHES

METALLIC FINISH INFORMATION

HANDCRAFTED FINISHES

All metallic Meljac plates are made of high-quality brass at their base. These plates are offered in over 30 different finishes, which are done by hand to provide a range of unique colors and effects to suit your project.

Most Meljac finishes have a lacquer applied to preserve the integrity of the finish. However, given the dynamic nature of metal and hand-finishing process finishes can change over time and there can be slight variations amongst finishes that add to the distinct character and appeal of the product.

Meljac offers several unlacquered finishes. Unlacquered Polished Brass will be highly reactive and quickly change with time and handling. Other selections such as Aged Brass, Antique Brass and Burnished Brass are unlacquered with a wax varnish intended to reduce the reactivity while still allowing for continued patination over time. Due to their patinated and reactive nature, we are not able to make any guarantees about the outcomes or evolution of unlacquered finishes.

You are welcome to contact Meljac North America with any questions regarding finish options, care and longevity.

POWDER COAT FINISHES

In addition to our metallic finish catalog we also offer powder coated plates in any RAL color, including various shades of white. Please see the RAL color chart for select options.

CUSTOM FINISHES

With our in-house finish expertise and capabilities, Meljac can also provide custom finishes specially crafted for your project. Please contact Meljac North America for details including pricing, order minimums and lead-times.

TOGGLE AND PUSH BUTTON FINISHES

Polished chrome is the default toggle or push button finish for plates in a cool finish (chrome, nickel, gunmetal, copper).

Golden brass is the default toggle or push button finish for plates in a warm finish (brass, bronze).

Black chrome is also available as a premium option for toggles and push buttons.

Select finishes also offer the option to have the toggle or push buttons matched to the finish of the plate. Due to the additional labor required for toggle and push button finish matching, this option incurs additional cost and requires a lead-time of 12 weeks.

PAINTING PLATES

For projects that wish to paint their plates on-site, Meljac offers the option to have the plates delivered in a burnished raw brass to allow for priming and painting. Please keep in mind that specific primer and paint is required to successfully paint on a metallic surface.

FINISH AVAILABILITY AND TIERS

Since all Meljac products are made-to-order they are available in any finish in the Meljac catalog.

Each finish falls into one of the three pricing tiers. These are listed below and denoted with a T1, T2 and T3 on the finish image pages.

Tier 1 (T1)

Gray Gunmetal / Canon de Fusil Anthracite *
Sanded Gray Gunmetal / Canon de Fusil Sablé
Polished Chrome / Chromé Vif *
Brushed Chrome / Chromé Mat
Brushed Nickel / Nickel Brossé
Polished Nickel / Nickel Brillant
Sandblasted Nickel / Microbillé Nickel

Tier 2 (T2)

Light Bronze / Bronze Médaille Clair *
Light Bronze Matte / Bronze Médaille Clair Vernis Mat *
Medium Bronze / Bronze Médaille Allemand *
Dark Bronze / Bronze Médaille Foncé *
Brushed Brass / Champagne *
Golden Brushed Brass / Doré Patiné *
Unlacquered Polished Brass / Laiton Poli Non-Verni *

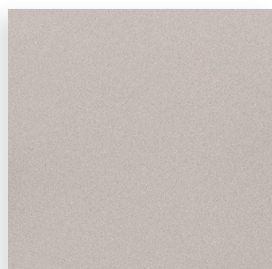
Tier 3 (T3)

Dark Polished Nickel / Nickel Noir Brillant *
Black Matte Nickel / Nickel Noir Mat *
Black Stone Chelsea
Sandblasted Chrome / Microbillé Chromé
Medium Pewter / Etain Moyen *
Belgian Gunmetal / Canon de Fusil Belge *
Dark Brushed Silver / Argent Patiné *
Ebony / Ebène
Powdercoats
Sandblasted Gunmetal / Microbillé Canon de Fusil Anthracite
Lacquered Polished Brass / Laiton Poli Vernis *
Burnished Brass
Antique Brass NA *
Aged Brass *
Satin Copper / Cuivre Satiné *
Dark Brushed Copper / Cuivre Patiné *
Aged Burnished Copper / Cuivre Vieilli Bouchonné *
Antique Copper / Cuivre Antique *

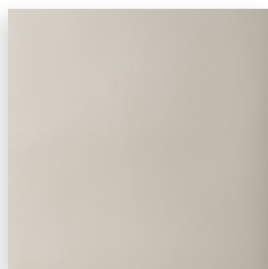
METALLIC FINISHES

■ Unlacquered ● Mechanism finish can be matched to plate finish

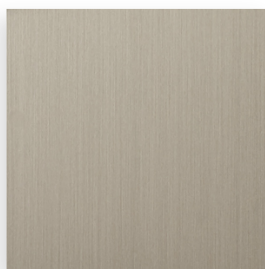
NICKEL & STONE



Sandblasted Nickel
Microbillé Nickel (T1)



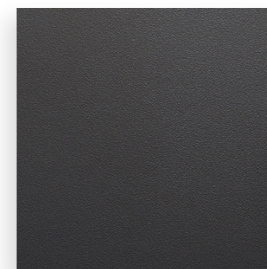
Polished Nickel
Nickel Brillant (T1)



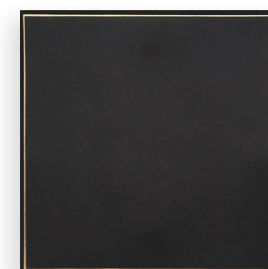
Brushed Nickel
Nickel Brossé (T1)



Dark Polished Nickel ●
Nickel Noir Brillant (T3)



Black Matte Nickel ●
Nickel Noir Mat (T3)



Black Stone Chelsea
(T3)

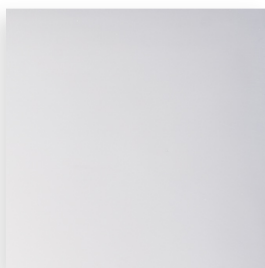
CHROME & PEWTER



Sandblasted Chrome
Microbillé Chromé (T3)



Brushed Chrome
Chromé Mat (T1)



Polished Chrome ●
Chromé Vif (T1)



Medium Pewter ●
Etain Moyen (T3)

GUNMETAL



Gray Gunmetal ●
Canon de Fusil Anthracite (T1)



Sanded Gunmetal
Canon de Fusil Sablé (T1)



Sandblasted Gunmetal
Microbillé Canon de Fusil
Anthracite (T3)



Belgian Gunmetal ●
Canon de Fusil Belge (T3)



Dark Brushed Silver ●
Argent Patiné (T3)



Ebony
Ebène (T3)

METALLIC FINISHES

■ Unlacquered ● Mechanism finish can be matched to plate finish

BRASS



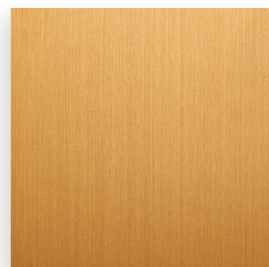
Polished Brass ● ■
Lacquered (T3) or
Unlacquered (T2).



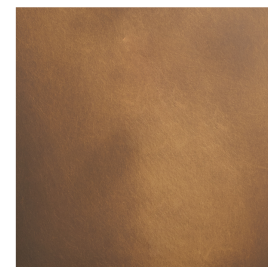
Brushed Brass ●
Champagne (T2)



Burnished Brass ■
Unlacquered with Wax Varnish
(T3)



Golden Brushed Brass ●
Doré Patiné (T2)



Antique Brass NA ● ■
Unlacquered with Wax
Varnish (T3)

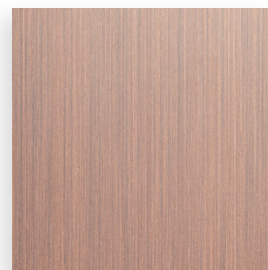


Aged Brass ● ■
Laiton Vieilli Ciré
Unlacquered with Wax
Varnish (T3)

COPPER



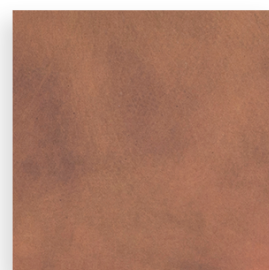
Satin Copper ●
Cuivre Satiné (T3)



Dark Brushed Copper ●
Cuivre Patiné (T3)



Aged Burnished Copper ●
Cuivre Vieilli Bouchonné (T3)



Antique Copper
Cuivre Antique (T3)

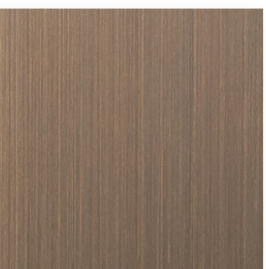
BRONZE



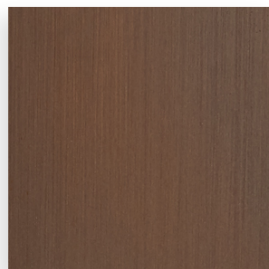
Light Bronze ●
Bronze Médaille Clair (T2)



Light Bronze Matte ●
Bronze Médaille Clair Vernis Mat
(T2)



Medium Bronze ●
Bronze Médaille Allemand
(T2)



Dark Bronze ●
Bronze Médaille Foncé
(T2)

CONTACT

info@meljac-na.com

323-421-7426

meljac-na.com